

## INTERNATIONAL CONFERENCE 2004

September 23<sup>rd</sup> - 25<sup>th</sup>, 2004

### 'Questions of Quality'

Defining, Assessing & Supporting  
Quality in Early Childhood  
Care and Education

Registration now open  
on-line at [www.cecde.ie](http://www.cecde.ie)



### Dublin Castle, Ireland



2<sup>ND</sup> ANNOUNCEMENT

## Welcome Note

On behalf of the Centre for Early Childhood Development and Education (CECDE) I am delighted to invite you to our first international conference on Quality in Early Childhood Care and Education.

The conference will be held in the beautiful environs of the Dublin Castle Conference Centre, Ireland from the 23rd-25th September and will be hosted by Mr Noel Dempsey, Minister for Education and Science.

The theme we have chosen is Quality in Early Childhood Care and Education. Children have a right to have their needs met by high quality services and we expect a lively exchange of diverse views and interpretations of quality from around the globe.

I look forward to meeting you in Dublin in September.



Heino Schonfeld, Director CECDE



## Who Are We?

The CECDE is an initiative of the Dept. of Education and Science, Dublin Institute of Technology and St. Patricks College Drumcondra. We were launched by The Minister for Education and Science in October 2002. Our overall purpose is to develop and co-ordinate early childhood care and education in pursuance of the objectives of the Government White Paper 'Ready to Learn'. Our three main objectives are

- To develop a quality framework for early childhood care and education.
- To pilot targeted interventions for children who are disadvantaged and those who have special needs.
- To advise the Department of Education on policy issues in the area.

Find out more about our Programme of Work by visiting our website at [www.cecde.ie](http://www.cecde.ie).

## Who Should Go?

This conference is aimed at practitioners, policy makers, parents, academics, students and anyone with an interest in early childhood care and education. It will provide a valuable opportunity for all those working with young children to participate actively in a dynamic forum which will address key questions of quality. This is a chance for delegates to share information and experiences of practice; to discuss and debate current research findings; to exchange innovative policy approaches and to network with others who are committed to making a difference in the lives of young children.

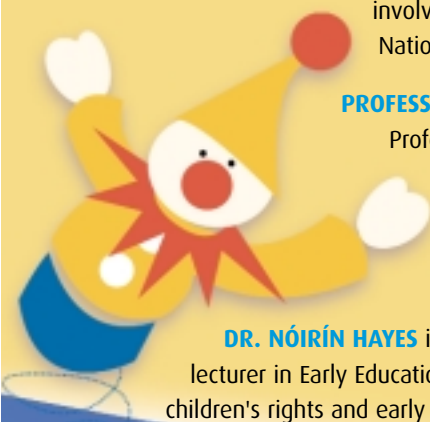
## Keynote Speakers

**DR. RICHARD CLIFFORD**, Senior Scientist at the Frank Porter Graham Child Development Institute at the University of North Carolina and co-director of both the National Center for Early Development and Learning and the National Prekindergarten Center in the US. Dr Clifford's main interests include the public financing of programmes for children and the provision of quality learning environments for young children.

**DR. MATHIAS URBAN** is from the Institute of Pedagogy at the Martin Luther University in Halle-Wittenberg, Germany. He has been involved in the development of quality programmes for many years and since 1999, has worked with the National Quality Initiative in Germany.

**PROFESSOR TRICIA DAVID** is Emeritus Professor of Education at Canterbury Christ Church University College. Professor David led the Literature Review team for the Birth to Three Matters project. Her research and writing is mainly concerned with the earliest years (birth to age 6). She is editor of the International Journal of Early Childhood and a member of the national executive of the British Educational Research Association. Professor David is known internationally for her work with l'Organisation Mondiale pour l'Education Prescolaire (OMEP) and with the OECD.

**DR. NÓIRÍN HAYES** is the Head of School of Social Sciences and Legal Studies at the Dublin Institute of Technology and a lecturer in Early Education and Developmental Psychology. She has a particular research interest in young children learning, children's rights and early educational policy. Dr Hayes is also a member of the CECDE Board of Management.



## Outline Programme

### Thursday 23rd September

- 4.00pm **Registration**
- 6.30pm **Welcome Reception**, State Apartments, Dublin Castle
- 7.30pm **Irish Night**, Taylors Three Rock (ticket required) *Transport will be provided from Dublin Castle*

### Friday 24th September

- 9.00am **Registration**
- 9.30am Opening by **Mr Noel Dempsey, Minister for Education & Science**
- 10.00am Keynote Speaker – **Professor Tricia David**  
**QUESTIONS OF QUALITY: THE CONTRIBUTION OF RESEARCH EVIDENCE TO DEFINITIONS OF QUALITY IN EARLY CHILDHOOD EDUCATION AND CARE PRACTICE**  
 Defining quality is a difficult and culture-laden task. When research is used to underpin policy and practice, there is a need to clarify the influences of assumptions, expectations and values in research. Professor David will discuss the main messages from research which are embedded in the *Birth to Three Matters* pack and the BERA review, and examine the resulting definitions of quality Early Childhood Education and Care provision for young children.
- 11.00am **Coffee**
- 11.30am **WORKSHOPS SESSION 1 – Defining Quality**
- 1.00pm **Lunch**
- 2.30pm Keynote Speaker – **Dr Mathias Urban**  
**QUALITY, AUTONOMY AND THE PROFESSION**  
 Appropriate pedagogical frameworks, adequate investment and effective management and leadership systems are some of the predominant issues in the debates on Quality in ECCE. In Germany, the “National Quality Initiative” (1999 – 2003) has undertaken a first attempt to develop quality criteria and evaluation procedures. However, Dr Urban suggests that we should be cautious and critical as to whether the increase of formal regulation can lead to the desirable outcome: the development of an autonomous profession for the early years sector.
- 3.30pm **Coffee**
- 4.00pm **WORKSHOPS SESSION 2 – Assessing Quality**
- 5.30pm **Close**
- 8.00pm **Gala Dinner**, Dublin Castle (ticket required)

### Saturday 25th September

- 9.00am Keynote Speaker – **Dr Richard Clifford**  
**STABILITY AND CHANGE IN LEARNING ENVIRONMENTS**  
 While children need stability in their learning environments, these environments must be flexible enough to reflect the changes in children’s abilities and interests. This session will report on several large-scale studies of children in Europe and the USA and measure change and quality in learning environments over time.
- 10.00am **Coffee**
- 10.30am **WORKSHOPS SESSION 3 – Supporting Quality**
- 12.00pm **Panel Discussion**, feedback from workshops 11.30am chaired by **Dr. Nóirín Hayes**
- 12.50pm **Conference Close**, **Dr. Nóirín Hayes**
- 1.30pm **Lunch**

## Workshop Sessions 1 - 3

### Friday 24th September 11.30am • WORKSHOP SESSION 1 – Defining Quality

Name	Organisation	Abstract Title
A Ruth A Doran	St Jude Preschool, Florida, USA	A Critical Examination of the Use of Fairy Tale Literature with Children Aged 2-5 Years in Developmentally Appropriate Early Childhood Care and Education Programs. What role does Content Play in Early Childhood Literature?
Mary Gallagher	Ireland	The Study of Spontaneous Drawings of Young Children; Implications for the Quality of the Learning Environment
B Colette Murray, Jan Peeters	Diversity in Early Childhood Care and Education (DECET) International	Promoting Diversity and Equality in Early Childhood Care, Education and Training
Ashling Hooper	National Children's Nurseries Association, Ireland	Defining Quality for the NCNA Centre of Excellence Award Self-Evaluation Project
C Maresa Duignan, Thomas Walsh, Philomena Donnelly	CECDE Ireland St Patrick's College, Ireland	Quality – A Global Issue? A review of National/International Policies, Practices and Research pertaining to Quality. Quality: Control or Autonomy?
D Elizabeth Dunphy, Nina Bolgan	St Patrick's College, Ireland Oslo University College, Norway	Young Children's Observations About Number and Conventional Numeric Symbols Rethinking the Computer Culture with Early Learners
E Mary Meaney, Karen Marie Eid Kaarby	National Disability Authority, Ireland Oslo University College, Norway	Policy, Legislation and Practice for Children with Special Needs in Ireland The Nature's Impact on Children's Play
F Jacqueline Fallon	CECDE, Ireland	A Conceptual Framework of Young Children's Development and Learning in Ireland: the implications for quality in early years care and education
Imelda Madigan	High/Scope, Ireland	Defining, Assessing and Supporting Quality in Early Childhood Care and Education – the High/Scope Ireland Model

### Friday 24th September 4.00pm • WORKSHOP SESSION 2 – Assessing Quality

A Mary O'Kane	DIT/CECDE	A Study of the Impact of Child Care Regulation on the Quality of Early Childhood Services in Ireland
Anne Fay & Clare O'Toole	Irish National Teachers Organisation, Ireland	Universal Early Education for 4-6 year olds in Ireland: The experience of the Irish Primary Teacher
B Francis Douglas	UCC, Ireland	A Critique Of ECERS – As a Measure Of Quality in Early Childhood Education and Care
Dr Mary Lewis & Dr Peter Archer	St Patrick's College, Educational Research Centre, Ireland	Observation Methodology in Preschool Programme Evaluation: The Early Start Experience
C Christine Ure	University of Victoria, Australia	Assessing Quality in Early Childhood Settings – Reflective Self-assessment for Early Childhood Practitioners
Ffiona Crawford	Department of Education N. Ireland	Improvement through self-evaluation in Pre-school Education
D Michelle Hart	Border Counties Childcare Network, Ireland	Listening And Learning: Empowering Children in Early Childhood Services
Brian Yeats	Belfast Education & Library Board, N. Ireland	Involving Children in their own learning: Report of an action research project on formative assessment
E Denise Taylor	National Childcare Accreditation Council Inc., Australia	Developments of Standards and Measurement Tools for Quality Assurance Systems in Australian Children's Services
Gerry Mulhearn	Dept of Education & Children's Services, S Australia	Defining, Assessing and Supporting the Quality of Education and Care for Babies and Toddlers in Centre based Childcare
F Ciara O'Toole	Cope Foundation, Ireland	The Relationship Between Preverbal Behaviour and Language
Ivar Männamaa	Hea Algus, Estonia	Assessing Teachers' Performance In Pre-Primary and Primary Schools in Estonia

### Saturday 25th September 10.30am • WORKSHOP SESSION 3 – Supporting Quality

A Mary Daly, Kerri Smith, Emma Jane Nulty	Barnardos	Integrated Therapeutic Group Work with Young Children in a Family Support Setting
Dr Caroline Barret-Pugh, Ais Prof Mary Rohl	Edith Cowan University, Perth, W. Australia	Evaluating 'Better Beginnings', A Family Literacy Program in Western Australia
B Sidsel Hauge/Kari Lamer	Oslo University College, Norway	You and me and the two of us! A framework for increasing social competence in children in nursery schools and some examples of how to support children developing social competence through dramatic play
Vaclav Sneberger, Tatjana Vonta	International Step by Step Association	Building a System of Professional Development Through the use of Teacher Standards as a means to Supporting Quality Teaching Practices
C Carmel Brennan, Claudia Gluschkankof	IPPA (CECDE/DIT), Ireland Levinsky College, Israel	Supporting Play – Supporting Quality Music And Play: Diverse Aspects Of 4-6 Year Olds' Self-Initiated Musical Play
D Jean Oswald, Rachel Glennane, Aoife Timothy, Trish Morrison, Maria Walls	Central Remedial Clinic, Ireland Ireland	Interdisciplinary Team Assessment CRC Style Building Blocks to Best Practice
E Irene Gunning, Kathy R. Thornburg, Peggy Pearl	IPPA, Ireland University of Missouri, Southwest Missouri State University	Reconceptualising Community Playgroups in Contemporary Ireland Quality and Teacher Turnover Related to a Child Care Workforce Development Initiative
F Pauline Moreau	Dept of Justice, Equality and Law Reform, Ireland	Equal Opportunities Childcare Programme 2000-2006
Annette McDonnell	CECDE	Supporting Quality through Targeted Research on Special Needs and Disadvantage

## Conference Venue – Dublin Castle

The venue we have chosen for the conference is Dublin Castle. Few conference centres anywhere in the world can claim a location so steeped in history as Dublin Castle Conference Centre. Although the original structure of the Castle was built in the early 13th century, the importance of the site can be traced back even further. Archaeological investigations have confirmed its significance as an important site in Viking and even pre-Viking times. It has been at the heart of Dublin life for centuries before King John, in 1204. The latest addition is the modern Conference Centre, which was designed and equipped for Ireland's Presidencies of the European Community on the site of the excavated Corke Tower and Castle Moat.

## Social Programme

### Thursday 23rd September 2004 - Welcome Reception

A drinks and finger food reception will be hosted in the historic State Apartments of Dublin Castle.

**Cost included in registration fee.**



### Thursday 23rd September 2004 - Irish Night

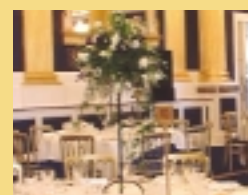
A traditional Irish evening will take place at 'Taylors Three Rock' located in the foothills of the Dublin Mountains. This relaxed evening includes dinner, Irish music and contemporary 'Riverdance' style dancing.

**Cost: €70.00 per person including dinner, wine with dinner, entertainment and return transportation.**

### Friday 24th September 2004 - Gala Dinner

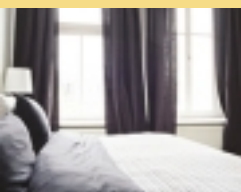
St. Patrick's Hall is one of the most significant and prestigious public rooms in Ireland. Here the inaugurations of the Presidents of Ireland take place, as do other important State Functions including State Banquets for visiting Heads of State. The evening will begin with a drinks reception, followed by sumptuous food and an exciting entertainment programme.

**Cost: €85.00 per person including 4 course dinner, pre-dinner drinks, wine with dinner and entertainment.**



## Accommodation

Accommodation is available in the city centre across a wide range of prices categories. You can avail of:

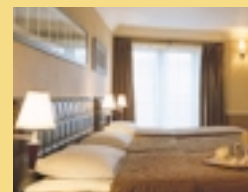


### The Morrison Hotel Four Star \*\*\*\*

Located between the Ha'penny Bridge and Capel Street Bridge overlooking the river Liffey. Designed by John Rocha the hotel has 95 bedrooms all equipped with high-tech efficiency to suit the modern traveller. **10 minutes walk from Dublin Castle.**

### The Paramount Hotel Three Star \*\*\*

This hotel is one of Dublin's most cosmopolitan of Hotels, tastefully designed to the very elegant 1930's style of architecture. Situated on the edge of the famous Temple Bar Area the hotel offers 70 luxurious ensuite bedrooms each appointed to the highest of international standards with data point connection. **Across the road from Dublin Castle.**



### Jurys Christchurch Inn Three Star \*\*\*

Modern attractive rooms capable of accommodating up to 3 adults or 2 adults and three children. All rooms are ensuite with multi-channel TV, tea/coffee making facilities, radio and DD phone. Located in the heart of Dublin City, opposite Christchurch Cathedral, the Inn has an informal restaurant and lively pub. **5 minutes walk from Dublin Castle.**

### Hotel Rates

The following rates are per night and include full Irish breakfast. Service charge and taxes are included.

Hotel	Single	Double	Single	Double
The Morrison Hotel ****	€177	€208		
The Paramount Hotel ***	€115	€155		
Jurys Christchurch Inn ***	<b>Thursday Night</b> €116	<b>Thursday Night</b> €124	<b>Fri / Sat Night</b> €124	<b>Fri / Sat Night</b> €132

## Further Information

For further information and bookings, please contact: Sinead Marrinan, Conference Partners Ltd.,

96 Haddington Road, Ballsbridge, Dublin 4. Tel: +353-1-667 7188 Fax: +353-1-664 3701

Email: [sinead@conferencepartners.ie](mailto:sinead@conferencepartners.ie)

Conference website: [www.cecde.ie](http://www.cecde.ie)



# Conference Registration Form

## 1. DELEGATE DETAILS: (One form per delegate)

Surname  First Name  Title   
 Position  Organisation   
 Address   
 City  Postal Code  Country   
 Telephone  Fax   
 E-Mail Address

## 2. REGISTRATION FEE:

Early registration fee prior to 23rd August 2004  €295\* per delegate  
 Later registration fee after 23rd August 2004  €395\* per delegate  
**Total A: €**

\*Fee includes full day attendance, lunch and all conference materials. Full prepayment is essential to guarantee your booking.

## 3. ACCOMMODATION:

I require accommodation  I do not require accommodation  
**Total B: €**

Please indicate your hotel choice in order of preference. Accommodation will be allocated on a first come, first served basis:  
 Hotel 1  Hotel 2  Hotel 3

Hotel	Single	Double	Hotel	Single	Double	Single	Double
The Morrison Hotel ****	€177	€208	Thursday Night	Thurs Night	Thurs Night	Fri/Sat Night	Fri/Sat Night
The Paramount Hotel ***	€115	€155	Jurys Christchurch Inn ***	€116	€124	€124	€132

\*Rates are per room per night and are inclusive of full Irish breakfast  
 Arrival Date / /  Departure Date / /  No. of Nights  Cost per night €   
 Comments/Special Needs:

## 4. SOCIAL PROGRAMME (Please see page 6 for further details)

**Total C: €**

Date	Function	Cost	Total	Dietary Requirements
Sept 23rd	Irish Night	€70 x <input type="text"/> tickets	€ <input type="text"/>	<input type="text"/>
Sept 24th	Gala Dinner	€85 x <input type="text"/> tickets	€ <input type="text"/>	<input type="text"/>

## 5. WORKSHOPS (For full details on the workshops please see overleaf) Please select your preferred workshop for each session

**Session 1 'Defining Quality' Fri 24th Sept 11.30am**  
 Workshop A  Workshop B  Workshop C  Workshop D  Workshop E  Workshop F

**Session 2 'Assessing Quality' Fri 24th Sept 4.00pm**  
 Workshop A  Workshop B  Workshop C  Workshop D  Workshop E  Workshop F

**Session 3 'Supporting Quality' Sat 25th Sept 10.30am**  
 Workshop A  Workshop B  Workshop C  Workshop D  Workshop E  Workshop F

## 6. PAYMENT METHOD Full prepayment is essential to guarantee your booking.

**TOTAL A+B+C: €**

Please indicate your chosen method of payment:  
 **Cheque:** I enclose a cheque made payable to Conference Partners Ltd. for €  as payment for  persons.  
 **Credit Card:**  Visa  Mastercard  Access  
 Card Number           Exp. Date:      
 Cardholder Name  Invoice  PO number   
 Contact name for billing  Address

**Terms and Conditions:** Please note that early booking is essential as places will be limited. All registration and accommodation will be allocated on a first-come-first served basis. Cancellations received after the 23rd of August will not be re-refundable and 1 night's accommodation will be charged for accommodation cancelled after 23rd August 2004.

Please send completed registration form along with payment to:  
**Sinead Marrinan, Conference Partners Ltd, 96 Haddington Road, Ballsbridge, Dublin 4**  
 or register on-line at [www.cecde.ie](http://www.cecde.ie)